

A close-up photograph of a young couple in formal wedding attire. The woman, on the left, is wearing a white lace wedding dress and a pearl necklace. She is smiling and looking down at the man. The man, on the right, is wearing a black tuxedo with a white bow tie and is smiling broadly, looking up at her. She has her hands on his head, adjusting his hair. The background is a light, neutral color with a white chair back visible.

*Be gorgeous.*

*Be Savvi.*

savvi  
FORMALWEAR

## *Voted Best in Formalwear!*



Want to know why Savvi was Voted BEST in Formalwear?

We carry only the leading names in men's formalwear, with a large selection of super luxurious wool tuxedos for your comfort. Our local inventory and dry cleaning facility lets us provide you with a level of service and quality unmatched by any other tuxedo company, including same day rentals, last minute changes, right up to your first step "down the aisle." We encourage all customers to have an in-store final fitting to ensure they look their very best. Take advantage of our complimentary tuxedo try-on's, so you can see what looks good on you before you order. And Savvi has great prices including a 25% discount off bridesmaid's dresses with our Preferred Partner, The Ultimate Bride.



## *Be sophisticated. Be Savvi.*

### **A Designer wedding to remember.**

Black tie, red roses and sterling silver. Without a doubt, it'll be an evening to remember.

And certainly, the one detail that will stand out is that good looking tuxedo. It's got it all:

The right fit and elegant cut; designed to give you the feeling of utter confidence.



A



B



C



D



E



F

**A** Calvin Klein  
Aston  
Two Button Framed Notch Lapel  
Super 100's Wool

**B** Calvin Klein  
Sterling, A Savvi Exclusive  
Two Button Notch Lapel  
Super 100's Wool

**C** Chaps Ralph Lauren  
Barrington  
Two Button Notch Lapel  
Tropical Wool

**D** Chaps Ralph Lauren  
Starwood  
Three Button Notch Lapel  
Super 100's Chalk Stripe

**E** Red Sleeve  
Hampton, A Savvi Exclusive  
Three Button Notch Lapel  
Super 100's Corded Wool

**F** Perry Ellis  
Freedom  
Three Button Notch Lapel  
Tropical Wool



G



H

**G** Joseph Abboud  
Tribeca, A Savvi Exclusive  
Two Button Peak Lapel  
Super 120's Tone on Tone

**H** Joseph Abboud  
Carlyle  
Two Button Framed Peak Lapel  
Super 120's Wool



A

**A** Perry Ellis  
Rio, A Savvi Exclusive  
One Button Peak Lapel  
Tropical Wool



B

**B** After Six  
Black LaStrada  
Two Button Satin Trim Fashion Lapel  
Super 100's Wool  
*Also available in White and Ivory*

# Be fashion-forward. Be Savvi.

You will look and feel certified impeccable.

You're all about clean lines and fresh perspectives. And at your wedding, the rules of protocol will be tested, maybe even rewritten. So in honor of all you rugged individualists, we offer an outstanding collection of smashing contemporary styles. Cutting edge fashions from world class designer names. Refreshingly unexpected, but unquestionably stunning.



C



D



E



F



G



H

**C** **Red Sleeve**  
Raven, A Savvi Exclusive  
Two Button Peak Lapel  
Super 100's Wool Pinstripe

**D** **Jean Yves**  
Black Mirage  
Buttonless Mandarin Collar  
*Also available in White*

**E** **Seven Unltd.**  
722SX  
Two Button Fashion Lapel  
Tropical Wool

**F** **After Six**  
Avalon  
Four Button Peak Lapel  
Tropical Wool

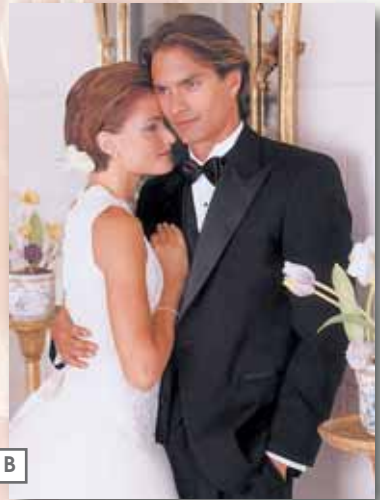
**G** **Red Sleeve**  
Corleone, A Savvi Exclusive  
Buttonless Pinstripe  
Super 100's Wool

**H** **Formal One**  
Merida  
Five Button Notch Lapel  
Tropical Wool



A

**A** Formal One  
Carrera  
One Button Notch Lapel  
Tropical Wool



B

**B** Oleg Cassini  
Palermo  
Two Button Peak Lapel  
Tropical Wool

# Be classic. Be Savvi.

Make a dazzling statement.

Ah, daytime weddings. A special kind of excitement happens when a wedding takes place on a glorious afternoon. In fact, with blue skies and streams of sunshine setting the mood, every important event can be memorable and magical. We understand you want your tuxedo to look and fit as fresh and perfect as the day. That's why we offer so many styles and of course, the Savvi Certified Fit. It's perfection, guaranteed.



C



D



E



F



G



H

**C** Oleg Cassini  
Salina  
Two Button Shawl Lapel  
Tropical Wool

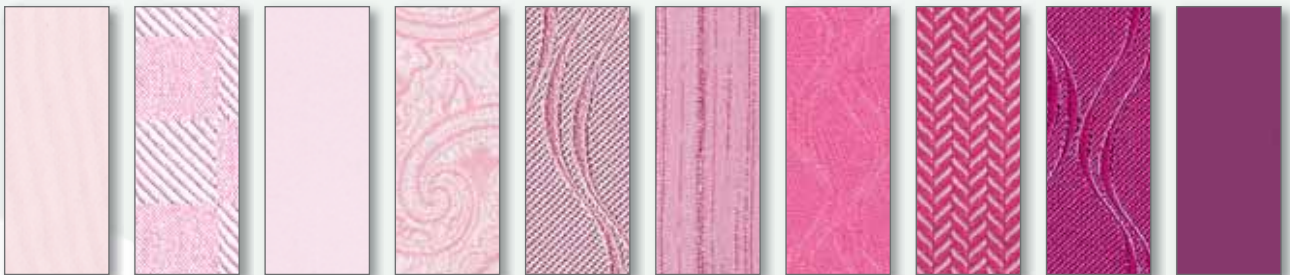
**D** Oscar de la Renta  
Trilogy  
Two Button Double Notch Lapel  
Tropical Wool

**E** After Six  
Oxford  
Three Button Notch Lapel  
Tropical Wool

**F** After Six  
Grey Cutaway  
Peak Lapel  
Tropical Wool  
*Also available in Black*

**G** After Six  
Black Full Dress  
Satin Peak Lapel  
Tropical Wool

**H** Savvi Collection  
Delaware  
Two Button Framed Notch Lapel  
Tropical Wool



Pink Aries    Light Pink Fusion    Petal Pink Jacquard    Petal Pink Paisley    Rose Spectrum    Bubblegum Tessoni    Bubblegum Spectrum    Peony Prism    Fuchsia Spectrum    Magenta Jacquard



Powder Blue Fusion    Baby Blue Tessoni    Periwinkle Fusion    Periwinkle Freedom    Cornflower Sterling    Navy Blue Fusion    Sapphire Aries    Royal Spectrum    Midnight Navy Sterling    Midnight Blue Prism



Seafoam Prism    Honeydew Prism    Celery Tessoni    Mint Spectrum    Celedon Jacquard    Celedon Paisley Tie    Clover Sterling    Lime Spectrum    Hot Lime Aries    Emerald Paisley



Coral Freedom    Coral Aries    Mandarin Freedom    Peach Spectrum    Burnt Orange Tessoni    Tangerine Spectrum    Creamsicle Sterling    Palm Beach Sterling    Persimmon Sterling    Cinnamon Sterling



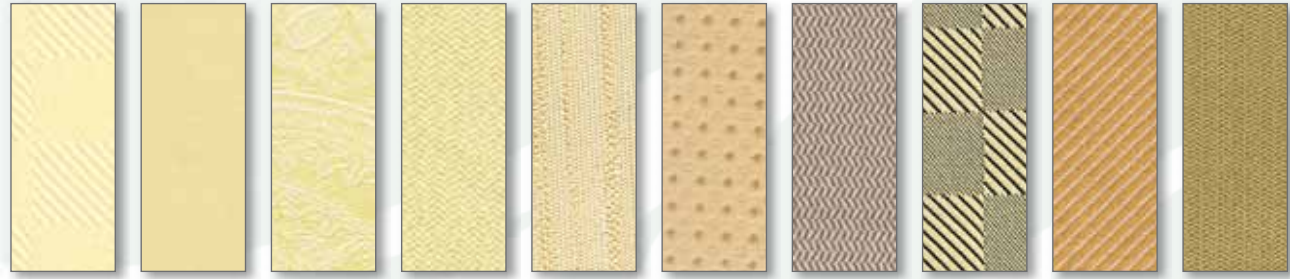
Cherry Red Tessoni    Ferrari Red Sterling    Red Spectrum    Red Jacquard    Red Paisley    Red Prism    Claret Aries    Wine Spectrum    Merlot Jacquard    Merlot Paisley



Lavender Fusion   Bali Lavender Sterling   Lavender Aries   Heather Spectrum   Lilac Freedom   Rum Raisin Sterling   Plum Tessoni   Magenta Paisley   Purple Prism   Twilight Aries



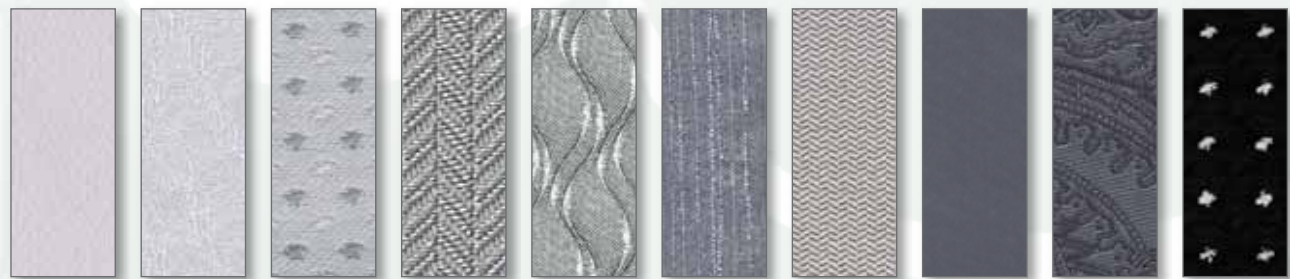
Aqua Aries   Pool Sterling   Turquoise Aries   Turquoise Spectrum   Aqua Spectrum   Teal Sterling   Hunter Fusion   Emerald Jacquard   Olive Sterling   Celdon Aries



Buttercup Fusion   Buttercup Jacquard   Buttercup Paisley   Buttercup Aries   Buttercup Tessoni   Gold Sterling   Gold Aries   Gold Fusion   Rio Gold Jacquard   Maize Aries



Riviera Cafe Sterling   Champagne Prism   Champagne Fusion   Latte Tessoni   Mocha Spectrum   Palomino Aries   Latte Sterling   Espresso Aries   Chocolate Jacquard   Truffle Prism



Ice Aries   Platinum Spectrum   Bali Silver Sterling   Platinum Prism   Silver Spectrum   Platinum Tessoni   Platinum Aries   Charcoal Jacquard   Charcoal Paisley   Black & White Sterling

Color swatches are shown for approximate shading. Please visit our showrooms to see the color and fabric in person. Don't see your shade? Call us to help you find it.

## Be scenic. Be Savvi.

### Coast-to-coast confidence.

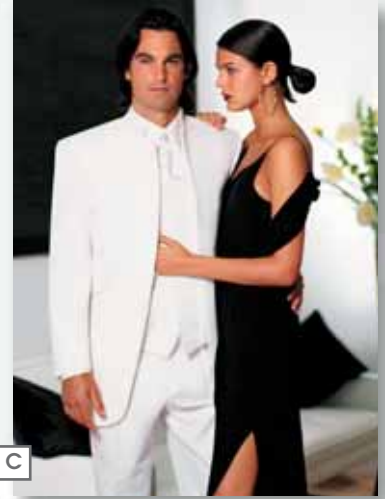
Taking your vows in Maui? Lifting her veil in Vail? Whether you're off to some exotic locale or exchanging rings under the apple tree where you first met, make sure you look as spectacular as the backdrop. We've got special styles that'll feel right for a tropical paradise, a mountaintop meadow – or even sailing skyward in a hot-air balloon.



A



B



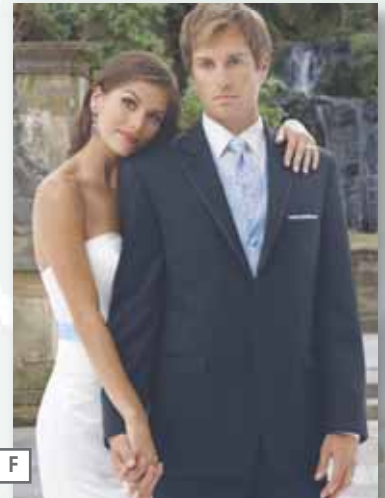
C



D



E



F

**A Calvin Klein**  
Legend  
Two Button Satin Trim Notch Lapel  
Grey Super 110's Wool

**B After Six**  
White Notch  
Two Button Notch Lapel  
Also available in Ivory

**C Jean Yves**  
White Mirage  
Buttonless Mandarin Collar  
Also available in Black

**D Red Sleeve**  
Windowpane, A Savvi Exclusive  
Two Button Notch Lapel  
Super 100's Wool Windowpane

**E FLOW**  
Casino  
Two Button Notch Lapel  
White with Black Pinstripes

**F Jean Yves**  
Navy Savoy  
Two Button Satin Trim Notch Lapel  
Super 100's Wool

**Red Sleeve**

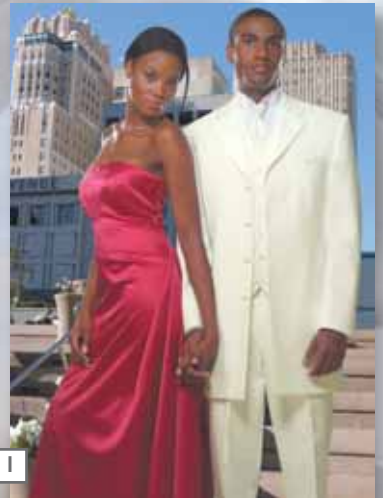
Tan Destination Suit, A Savvi Exclusive  
Two Button Notch Lapel  
*Also available in Black*

**G****After Six**

Ivory LaStrada  
Two Button Satin Trim Fashion Lapel  
*Also available in White and Black*

**H****Jean Yves**

Chocolate Parisian  
Two Button Notch Lapel  
Super 100's Wool Tone on Tone

**I****After Six**

Ivory Zenith  
Five Button Notch Lapel  
*Also available in White*

For great style and an uncommonly comfortable fit,  
we've got the shirts you're looking for.

# Shirts



White Microfiber  
Tone on Tone



White Microfiber  
Laydown



White Microfiber  
Wing



Ivory Microfiber  
Laydown



Ivory Microfiber  
Wing



Black Microfiber  
Laydown



White 1/4" Pleat  
Laydown



White 1/4" Pleat  
Wing



Ivory 1/4" Pleat  
Laydown



Ivory 1/4" Pleat  
Wing



Aries Striped Ties available in 22 Colors



Energy Ties  
Available in 16 Colors



# Shoes

When you're ready for the next big step, we've got the shoes to match any look.



Black Capri



White Capri



Black Dinero



Black Square Toe



White Square Toe



Ivory Square Toe



Black Lace



White Lace



Ivory Lace



Brown Lace

*We're here for you.*



Together, Savvi Formalwear and The Ultimate Bride bridal salon are 100% committed to making you look and feel great on your wedding day.

In fact, to help us guarantee your complete satisfaction, Savvi Formalwear and The Ultimate Bride offer appointments where you can try on different fashions and see what fits your style. Our websites let you preview our styles, schedule an appointment, submit measurements and more.

When you book with both Savvi Formalwear and The Ultimate Bride you'll receive our Preferred Partners Special which includes a **25% discount on bridesmaid's dresses** and more!

Call today and set up an appointment.



THE  
**Ultimate Bride**  
ST. LOUIS' FINEST BRIDAL SALON  
[www.TheUltimateBride.com](http://www.TheUltimateBride.com)

## *Be everywhere. Be Savvi.*

### **Coast-to-coast, guaranteed.**

- Use [savviformalwear.com](http://savviformalwear.com) to notify all your groomsmen with just one click. All you need is your registration number, and their email addresses.
- Your guys get measured close to home and submit their sizes on our secure website.
- Your groomsmen arrive for the wedding and pick up their tuxedos hassle-free and guaranteed to fit.



**CANADA**

Calgary

**ALABAMA**Birmingham  
Fairfield  
Hoover  
Mountain Brook**ARIZONA**Chandler  
Phoenix  
Tempe**CALIFORNIA**Anaheim  
Arcadia  
Bakersfield  
Beverly Hills  
Brea  
Chico  
Chula Vista  
Citrus Heights  
Corona  
Costa Mesa  
Downey  
Escondido  
Fontana  
Glendale  
Huntington Beach  
Kearny Mesa  
Laguna Niguel  
Lake Forest  
Lakewood  
La Mesa  
Los Angeles  
Montclair  
Moreno Valley  
Northridge  
Orange  
Redding  
Roseville  
Sacramento  
San Gabriel  
Thousand Oaks  
Torrance  
Vacaville  
Vista  
West Covina  
Yuba City**CONNECTICUT**Danbury  
Stamford**FLORIDA**Bradenton  
Brandon  
Clearwater  
Fort Myers  
Lakeland  
Miami  
Naples  
Orlando  
Plantation  
Port Charlotte  
Port Richey  
Saint PetersburgSanford  
Sarasota  
Tallahassee  
Tampa**GEORGIA**Acworth  
Alpharetta  
Atlanta  
Buford  
Douglasville  
Duluth  
Kennesaw  
Lithonia  
Marietta  
Morrow  
Snellville  
Tyrone  
Union City**IOWA**Ankeny  
Bettendorf  
Coralville  
Davenport  
Des Moines  
Marion  
W. Des Moines**IDAHO**Boise  
Couer D'Alene**ILLINOIS**Alton  
Aurora  
Bloomington  
Fairview Heights  
Gurnee  
Joliet  
Niles  
Orland Park  
Peoria  
Springfield  
West Dundee**INDIANA**Elkhart  
Evansville  
Fort Wayne  
Kokomo  
Marion  
Michigan City  
Mishawaka  
Merriville  
Portage  
South Bend**KANSAS**Topeka  
Wichita**KENTUCKY**Elizabethtown  
Lexington  
Louisville  
Owensboro**LOUISIANA**Alexandria  
Monroe  
Pineville**MARYLAND**

Baltimore

**MICHIGAN**Lansing  
Okemos**MINNESOTA**Bemidji  
Burnsville  
Cambridge  
Minneapolis  
Minnetonka  
Osseo  
Saint Paul  
Willmar**MISSOURI**Chesterfield  
Columbia  
Crestwood  
Des Peres  
Florissant  
Independence  
Mehlville  
Richmond Heights  
Saint Louis  
Saint Peters  
Springfield**NORTH CAROLINA**Cary  
Durham  
Hickory  
Lexington  
Raleigh**NEBRASKA**Lincoln  
Omaha**NEW JERSEY**East Brunswick  
Edison  
Freehold  
Hazlet  
Lafayette  
Linden  
Maple Shade  
Mercerville  
Middletown  
Moorestown  
Oakhurst  
Rockaway  
Somerville  
Succasunna  
Summit  
Teaneck  
Verona  
Wayne**NEW YORK**Bronx  
Brooklyn  
Forest Hills  
Horseheads  
Nanuet  
New York  
Staten Island  
Westbury**OHIO**Akron  
Ashtabula  
Boardman  
Canton  
Elyria  
Fairlawn  
Findlay  
Lima  
Mansfield  
Mentor  
Niles  
North Canton  
North Olmsted  
Parma  
Solon  
South Euclid  
Strongsville**OKLAHOMA**Norman  
Oklahoma City**OREGON**Albany  
Beaverton  
Clackamas  
Corvallis  
Eugene  
Gresham  
Hillsboro  
Lake Oswego  
Medford  
Portland  
Salem  
Springfield**PENNSYLVANIA**Butler  
Dickson City  
Drexel Hill  
East Greenville  
Edwardsville  
Erie  
Honesdale  
Pittsburgh  
Scranton  
Stroudsburg**SOUTH CAROLINA**

North Charleston

**SOUTH DAKOTA**

Sioux Falls

**TENNESSEE**Franklin  
Jefferson City  
Knoxville  
Memphis  
Murfreesboro  
Nashville**UTAH**Salt Lake City  
Sandy**VIRGINIA**

Alexandria

**WASHINGTON**Bellevue  
Burlington  
Everett  
Federal Way  
Kelso  
Kent  
Lynnwood  
Marysville  
Olympia  
Puyallup  
Redmond  
Seattle  
Silverdale  
Spokane  
Tacoma  
Tukwila  
Vancouver**WISCONSIN**Brookfield  
Green Bay  
Greendale  
Kenosha  
Madison  
Oak Creek  
Racine*locations*

Over 300 locations Nationwide, and we're adding more all the time.  
Visit us at [savviformalwear.com](http://savviformalwear.com) for the location nearest you.



savvi  
FORMALWEAR

*Voted Best in Formalwear  
3 Years in a Row*

### Missouri Locations

Chesterfield Mall  
636-532-1800

Columbia Mall  
573-445-6602

Crestwood Plaza  
314-968-8388

Jamestown Mall  
314-355-4440

Loop Store & Warehouse  
6185 Delmar Blvd.  
314-725-2150

Mid-Rivers Mall  
636-970-2281

St. Louis Galleria  
314-727-0088

South County Center  
314-894-2991

West County Center  
314-821-0070

### Illinois Locations

Alton Square Mall  
618-465-1110

St. Clair Square  
618-632-8415

White Oaks Mall  
217-787-8150

*Be yourself.*

*Be Savvi.*